

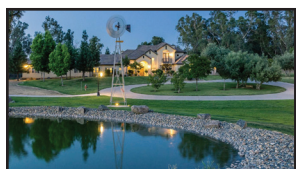
LONDON

PROPERTIES

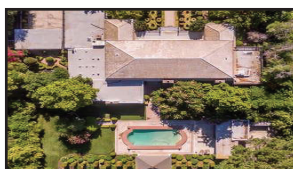
THE MOST TRUSTED NAME IN REAL ESTATE

LondonProperties • com

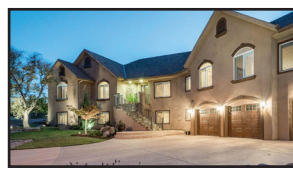
BRE #00463722



CUSTOM HOME \$3,449,000
5/4. Features an open floor plan, 8" wood doors, spacious kitchen equipped w/top of the line appliances, custom wood cabinets & large pantry. 12527#
LONDON PROPERTIES • 436-4000



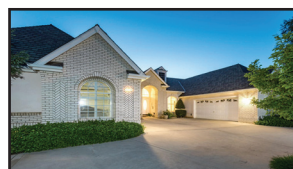
ELEGANT HOME!! \$1,150,000
3/3.5 Spacious kitchen w/double ovens, gas appliances & a large informal dining area that is sure to be the gathering spot for many affairs. 5267#
LONDON PROPERTIES • 436-4000



GORGEOUS BRIGHTON CREST \$1,050,000
6/5. Large master suite, great room, spacious kitchen w/ granite counter-tops, center island, breakfast nook, formal dining room, office, & huge family room. 21933#
LONDON PROPERTIES • 436-4000



FABULOUS LAKE FRONT \$679,900
3/2.5. Beautiful "smart" single story 2400± sf home on gorgeous Woodward Lake. Only one of the 200 lakefront homes for sale. 855#
LONDON PROPERTIES • 436-4000



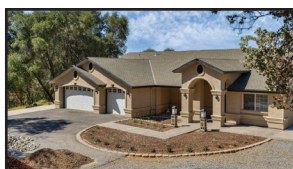
STUNNING PINNACLE W/ SOLAR! \$589,900
4/4. Exquisite office w/French doors, and cherry-wood built-ins. Full theater room w/custom seating, fireplace & French doors. 1660#
LONDON PROPERTIES • 436-4000



MAJESTIC 2-STORY \$523,000
5/3. Home w/shuttered windows in gated Castle-gate. Fabulous Clovis schools. LR w/high ceiling & elegant 12" crown molding. 10482#
LONDON PROPERTIES • 436-4000



JUST LISTED!! \$425,000
4/3. Beautiful & spacious home w/a swimming pool. Extended covered patio for entertaining. Comes with SOLAR! RV parking & storage shed. 2981#
ANA YESAYAN • 260-3013



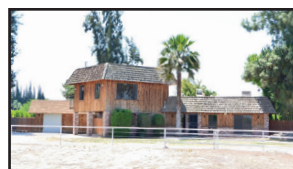
BEAUTIFUL HOME \$449,000
3/3. Amazing patio entrance. Relaxation and peaceful living room with vaulted & coiffured ceilings with plant shelves to display your finest art. #34387
LONDON PROPERTIES • 436-4000



OLD FIG TUDOR MASTERPIECE \$399,900
4/4. European Styling in and out, built 2003 with gorgeous old world styling. 18K fully gated lot with RV parking!! 1439#
CLIFF LLOYD • 779-5600



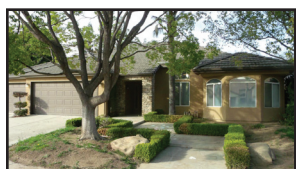
NEAR KINGSBURG GOLF & CC \$399,000
3/2. Well maintained home, beautifully landscaped, lots of amenities. Ideal home for retirement, investor or someone just wanting to play lots of golf. 3176#
LONDON PROPERTIES • 436-4000



SUBURBAN LIVING ON 1± AC \$369,000
Recently updated 3BD/2BA (2189± sf) main house + 2BD/1 BA (930± sf) guest house w/ kitchenette w/ electric range & refrigerator + laundry hook-up. 7845#
LONDON PROPERTIES • 436-4000



SHOP & CAR ENTHUSIAST \$350,000
4 bdrms - 2 1/2 baths, Wonderful floor plan, two extra large garages w/ a pit, shop area w/ equipment, owned solar panels. 6655#
DENISE MARVIN-LEWIS • 708-1770



NEAR SCHOOLS & SHOPPING \$349,900
Real hardwood floors, all California Closets, 4 bdrms, 2 bths, open kitchen, family room, & dining areas, perfect entertaining. 651#
LONDON PROPERTIES • 436-4000



CLOVIS SCHOOLS! \$349,950
4/3. Wonderful floorplan for everyone to have their own space! Large kitchen w/gas range, pantry & breakfast bar has center island which is open to the family room. 2923#
LONDON PROPERTIES • 436-4000



RANCHO MESA TRACT \$335,000
4/3. Easy living back yard, screened in patio area, south end of home will allow a car/fishing boat to be parked off street behind a fence. 6074#
LONDON PROPERTIES • 436-4000



LOCATION, LOCATION! \$330,000
3/2.5. Large living room, den w/fireplace. Fireplace has a newer granite front. Some crown molding. Two sliding glass doors leading to the backyard. 6161#
LONDON PROPERTIES • 436-4000



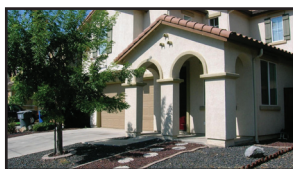
IN CLOVIS 20± ACRES \$329,000
Build the home of your dreams in Clovis, CA only about 20 min out of town. This 20.25± usable acreage in a gated residential community. 463002#
LONDON PROPERTIES • 436-4000



PRICE REDUCTION! \$277,000
3/2.5. Lovely home in great NW Fresno location near schools, restaurants & Fig Garden Village. Newly painted exterior. Big back yard w/pool. 1115#
JOHN AIELLO • 289-5121



HOOVER HIGH REMODEL \$257,997
3/2. Nice family home, could be four bdrms, 2235± sq ft, pool, remodeled kitchen & bths, designer tiles & granite, isolated game room or fourth bdrm. 6304#
LONDON PROPERTIES • 436-4000



WELL MAINTAINED HOME \$225,000
4/2.5. This wonderful home has many upgrades and is located in Orchard Pointe Estates. Bring your large family to this 4 bedroom move-in ready. 987#
LONDON PROPERTIES • 436-4000



VIEW OF THE SIERRAS \$265,000
3/3. Home on 1.25± acres is just the right size. Seller has updated the flooring installed stainless steel/black appliances, granite counters and put on a fresh coat of paint. 22097#
LONDON PROPERTIES • 436-4000



FIVE BEDROOMS! \$245,900
5/2. This home is 2208± sf and shows good openness inside on the ground floor, plus it also has one medium sized bdrm downstairs. #2106
LONDON PROPERTIES • 436-4000



COUNTRY HOME! \$232,500
Lovely 3 bedroom 2 bath in the country. Fenced for livestock, many fruit trees and grapes. Impressive set up. 19813#
NELLY ENOS • 871-1298

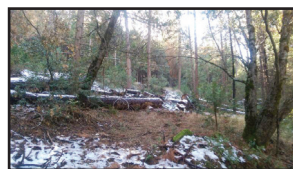


MOTIVATED SELLER \$231,000
3/2. Popular Hallmark Malibu Model shows pride of ownership. As you enter the front door, a living room w/ picture window overlooking the front yard. 6735#
LONDON PROPERTIES • 436-4000

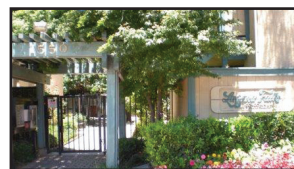
GRUPO
Hispano
436-4004
LONDON
PROPERTIES



1± ACRE IN MADERA \$180,000
2/1. 1± acre in the city limits, it is currently being lived in but would need some updates and repairs before it could be rented. 796#
LONDON PROPERTIES • 436-4000



SIERRA NEVADAS \$63,000
Welcome to the Sierra Nevadas! 9 miles from the famous Tenaya Lodge, tucked away on a pine dotted meandering road. 458702#
LONDON PROPERTIES • 436-4000



NEWLY REMODELED \$57,500
1/1. The kitchen boasts a newer Frigidaire refrigerator & electric free-standing range w/stove & oven, all newer custom oak cabinets, tile floor, & stainless steel sink. 1550#223
LONDON PROPERTIES • 436-4000

**GET MORE
Money & Freedom**
Real Estate
Licensing Course
436-4080

Fresno 436-4000	Clovis 322-4000	Atwater 209-358-0222	Chowchilla 665-5757	Hanford 589-6600	LEADING REAL ESTATE COMPANIES OF THE WORLD	Kingsburg 897-4888	Madera 661-6100	Merced 209-725-2100	Oakhurst 683-3400	Prather 855-8774	Sanger 875-8900
--------------------	--------------------	-------------------------	------------------------	---------------------	---	-----------------------	--------------------	------------------------	----------------------	---------------------	--------------------